

Ekoliner®

Partial lining of concrete pipes

References

With the Ekoliner you receive a quality product, which is manufactured in a patented procedure. The Ekoliner makes many new applications possible. Please read these processing references carefully. Please contact us for possible questions.

Content

1. Handling of the webs
2. Ekoliner concreting at the manufacturing
3. Ekoliner gluing into prefabricated pipes

1. Handling of the webs

The Ekoliner is to be kept protected against wetness and dirt. In roles supplied webs are to be unrolled flat one day before the installation at temperatures over 15°C.

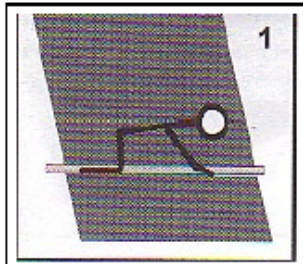
Ekoliner-webs can be cutted according to your data on measure or supplied homogeneous welded. Changes and spezial forms are easy to implement with each drawing blade.

General references:

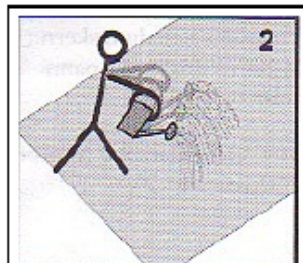
This information corresponds to our present level of knowledge in the described area and serve for you as a helpful suggestion for your own attempts. It is subjected to the revision, as soon as new realizations or experiences result. Orbi-Tech GmbH does not take over guarantee, adhesion or other responsibility for the results of working, which are obtained in connection with this information. This publication justifies no license and does not intend the injury of existing commercial patent rights.

When sticking the Ekoliners together, the processing refernces of the adhesive manufactrer are to be considered.

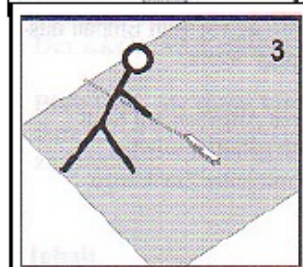
1. Ekoliner concreting at the manufacturing



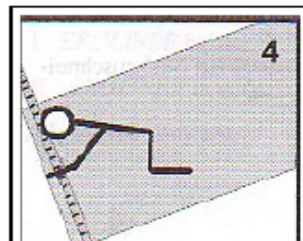
1. Cut the fitting part to measurement.



2. For a good connection with the concrete, damp the fleece material. **Usually this does not concern for webs that are not to be glued.**



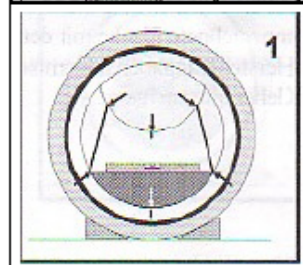
3. Rough up the fleece material with wire brooms.



4. Mark the web at both ends at the formwork core above and below.



5. Fasten the Ekoliner at the formwork core (PE-side to the core) with fasten bands. And afterwards concrete as usual.



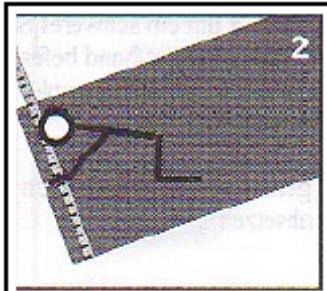
2. Concrete Ekoliner into prefabricated pipe:

1. Determine installation dimensions and mark the pipe corresponding.

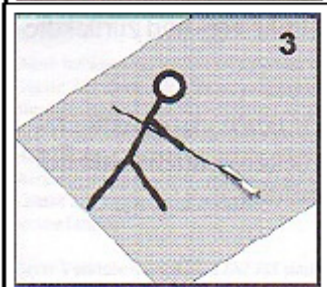
www.orbi-tech.com

e-mail: info@orbi-tech.de

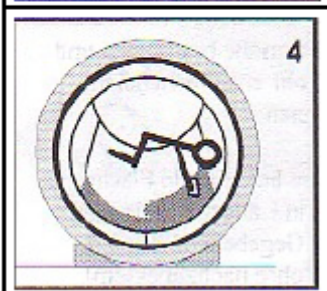
The surface, that is to be glued, must be flat in longitudinal direction. If necessary the pipes are to be improved!



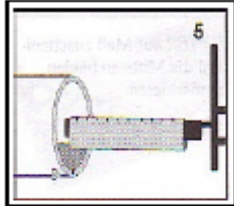
2. Cut the Ekoliner to measure and mark the center at both ends.



3. Rough up the fleece material with wire brooms.



4. Dig the marked surface with the adhesive, according to the manufacturer references.



5. Ekoliner putted around a heavy steel tube. Fasten with adhesive tape and introduce with the fork-lift truck.

Pay attention to exact centring and set off.

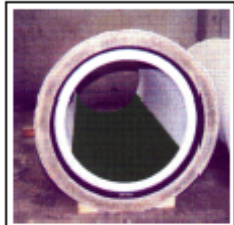


6. Turn the steel tube in front and back.

Press in slightly the Ekoliner to avoid cavities.



7. Press the edges until the adhesive is tight.



Finished.



For pipes with egg profile the remarks apply similar.